



# 2017 TRI-STATE SEVERE WEATHER and PREPAREDNESS CONFERENCE



February 18th 2017  
Ray and Joan Kroc Center  
8:00am—4:30pm

Sponsored in part by



# 2017

## Tri-State Severe Weather and Preparedness Conference



### February 18th 2017

#### Overview:

This third annual Tri-State Severe Weather and Preparedness Conference showcases responses to real life disasters and threats. Successful management of emergencies can only be accomplished through effective and pre-established partnerships. This conference offers you the opportunity to develop those relationships; gain the necessary information to develop your response, and recovery plans; create your preparedness messaging to those you serve; and gain valuable insight into lessons learned and established best practices.

#### Who Should Attend:

Anyone interested in severe weather or disaster relief are encouraged to attend, this is a can't-miss event! This conference is open but not limited to the following people:

- General Public
- Emergency Responders
- Emergency Management Personnel
- Dispatchers
- Storm Spotters
- Amateur Radio Operators
- Business Safety Managers

#### What Will You Learn:

This 8-hour intensive conference focuses on instruction and networking opportunities that will help prepare your organization for emergencies and disasters. Featuring nationally recognized experts and presentations, you will be able to augment your current strategies with demonstrated practices. Professional speakers with a variety of backgrounds and experience will present from many different aspects involving weather and critical incidents.

A hot breakfast and lunch will be provided at the conference venue and are good opportunities to meet and share ideas with others involved in the severe weather field.

Parking is available on 5th Street, across Vermont from the Kroc Center in the city municipal lot, or in the Adams County Health Department.

Overnight accommodations are available in the area from many hotels. Request our weather conference rate to receive a nightly rate of \$79. Reservations must be made prior to February 4th, 2017.

We have contacted the following hotels:



Hampton Inn 225 South 4th Quincy, IL 62301  (217) 224-8378
------------------------------------------------------------------------

Quality Inn & Suites 201 South 3rd Quincy, IL 62301  (217) 222-2666
---------------------------------------------------------------------------------

#### WHERE

Salvation Army Ray & Joan Kroc Center  
405 Vermont Street  
Quincy IL 62301

#### WHEN

Saturday, February 18th 2017  
8:00am to 4:30pm

#### REGISTRATION

**\$45.00** before February 10th  
**\$55.00** after February 10th and at the door  
(includes breakfast and lunch)

#### REGISTER ONLINE

[www.tristateweatherconf.com](http://www.tristateweatherconf.com)

Departments paying for members to attend may select "send invoice" and we will bill the department.

#### Please submit payments to:

Adams County EMA  
Tri-State Severe Weather Conference  
222 North 52nd Street  
Quincy IL 62305

#### QUESTIONS

Please contact the conference staff.

wxconference@co.adams.il.us  
217-277-2005

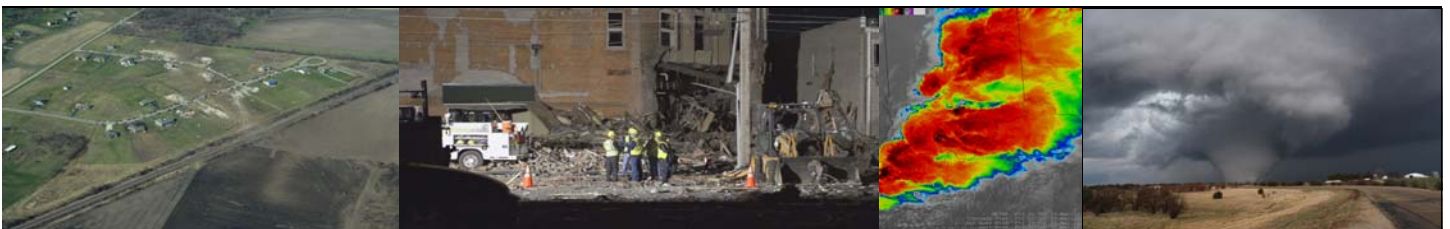
#### CONTINUING EDUCATION CREDITS

IEMA training hours



### Schedule of Events

Time	Description
7:00am—1:00pm	Registration
7:00am—8:15am	Breakfast
8:00am—8:15am	Opening Remarks
<b>The Rochelle-Fairdale, IL EF4 Tornado: Environment, Observations, and A Survivor's Story</b> <i>Dr. Walker Ashley, Associate Professor, NIU</i> <i>Brian VanVickle, Sheriff Ogle County</i>	
8:15am—9:30am	<p>On 9 April 2015, a violent, long-track tornado traversed areas of northern Illinois, moving at highway speeds across largely rural areas before killing two people in the small town of Fairdale. The parent supercell developed and matured rapidly in a unique environment ahead, and in the wake, of multi-modal clusters of severe storms. This case is illustrative of how quickly a storm can evolve—both visually and on radar—from unremarkable to violent in a matter of minutes. This presentation will examine all scales of this event, from the larger meteorological setting, to visual tour of the event from a number of angles, to the post-event aftermath and historical context.</p>
9:30am—9:45am	<i>BREAK and VENDOR TIME</i>
9:45am—10:45am	<b>Breakout Sessions #1</b> —see breakout information on next page
10:45am—11:00am	<i>BREAK and VENDOR TIME</i>
11:00am—12:00pm	<b>Breakout Sessions #2</b> —see breakout information on next page
12:pm—1:00pm	Lunch
<b>“Response to a gas explosion: Incident Management with Business and Community Support.”</b> <i>Rick Nichols, Canton Police Chief</i> <i>Chris Helle, Fulton County Emergency Manager</i> <i>Amanda Atchley, Executive Director Chamber of Commerce</i>	
1:00pm—2:15pm	<p>In November of 2016 a large building exploded after a gas leak damaging approximately 50 buildings and five apartment complexes. Agencies will discuss the response and working with the impacted business and residents.</p>
2:15pm—2:30pm	<i>BREAK and VENDOR TIME</i>
<b>"In The Eye Of The Storm - My Life As A Storm Chaser"</b> <i>Gene Robertson, Storm Chaser</i> <i>PDS Storm Tours, LLC</i>	
2:30pm—4:00pm	<p>Mr. Gene Robertson has been a storm spotter for the National Weather Service for over 15 years and has worked in Emergency Services for 32 years. Gene is the owner of PDS Storm Tours, LLC based in Garden City, Kansas providing Storm Chasing Tours across the Great Plains and Midwest. He is also a professional photographer and weather enthusiast.</p>
4:00pm—4:30pm	Closing Remarks



---

## Breakout Session #1

---

### **Social Media**

*Mark Basnight  
Anthony Marzano*

The evolution of social media represents a shift in how the world communicates. This workshop will examine the effective use of social media during real-world incidents, including lessons learned, so that participants will have a better understanding of how their agency can leverage the power of social media to benefit their message while avoiding public affairs pitfalls.

### **Radar Interpretation**

*Jim Kramper, WCM  
National Weather Service*

National Weather Service personnel will review the basics of radar technology, how it works, what it shows, and how to interpret the images.

### **Long Range Model Forecasting Problems**

*Alex Gibbs, NWS DVN*

With all of the sophisticated models available to predict weather, not many are reliable enough to effectively forecast weather past three days. This presentation will show the techniques forecasters implement while using models as well as show how major storms change throughout the time period.

### **Flood Technology**

*Anthony Heddlesten, P.E. CFM*

This will be a discussion on some of the tools and tips from the Corps of Engineers on flood response including everything from traditional sandbagging methods to new, high tech computer programs such as LIDAR and MICA. We will also cover the basics of how USACE flood response teams operate, interact with State and County officials and VERY BRIEFLY review the 6,000 inspection points that were collected this year across the 5 state region that the Rock Island District covers during fall levee inspections .

---

## Breakout Session #2

---

### **Radar**

*Jim Kramper, WCM  
National Weather Service*

This session consists of an in depth interpretation of radar images, dual polarization, case studies and the future.

### **Chainsaw Safety**

*Brian Cartwright, Field  
Support Specialist  
ECHO SHINDAIWA BEAR CAT*

Chainsaw safety class. This class will be covering safe cutting practices, safe operation of chainsaws, PPE, assessing hazards, escape routes, and why saws are dangerous and how the operator can protect themselves.

### **Powerline Safety**

*Tony O'Neal, Ameren Illinois*

Utility hazards can surround us at any time – especially before, during, and after a storm. This session covers basic recognition and safeguarding near utility hazards. Expectations of first responders with regard to communications, recognition of hazards, and reporting of emergencies will be discussed.

---