



# Illinois Mobile Support Teams

Incident Management Team  
and the  
Emergency Management Assistance Team



- Our authority to operate as state assets are through the Illinois Terrorism Task Force and the Illinois Emergency Management Agency.

*Teams are defined as Mobile Support Teams that have a Memorandum of Understanding (MOU) with the Illinois Emergency Management Agency.*

- Resources are funded through state and federal grants.

# EMAT & IL-IMT

## Working Together for You



*Members of both organizations cross work with each other for the common goal of ensuring your community is able to address its disaster in an efficient and effective fashion.*

# Teams

Some of the Mobile Support Teams (MSTs) available in Illinois:



## **INCIDENT COMMAND**

IL-IMT – Illinois Incident Management Team



## **EMERGENCY MANAGEMENT**

EMAT – Illinois Emergency Management Mutual Aid System



## **MEDICAL**

IMERT- Illinois Medical Emergency Response Team



## **PUBLIC WORKS**

IPWMAN – Illinois Public Works Mutual Aid Network



## **LAW ENFORCEMENT**

ILEAS – Illinois Law Enforcement Alarm System



## **FIRE**

MABAS – Mutual Aid Box Alarm System

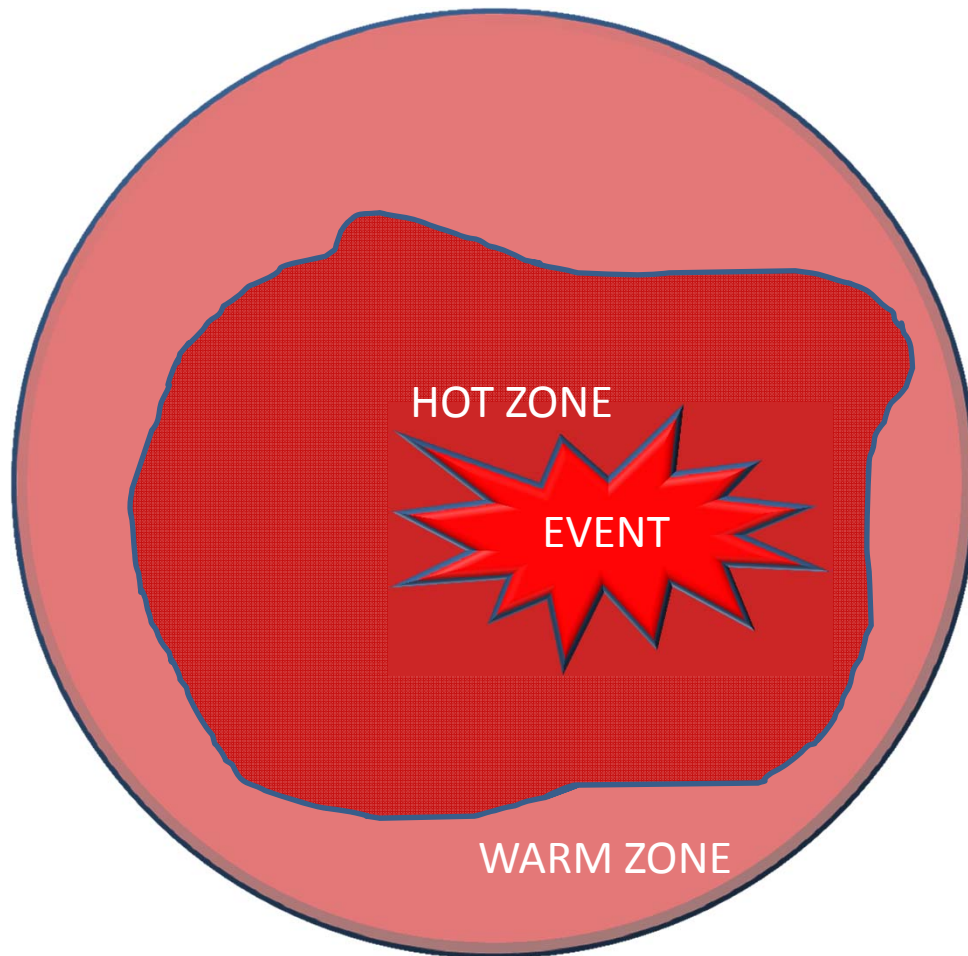


# Why Special Teams?

- An incident is initially managed by local jurisdictions and agencies.
- As an event becomes complex additional resources can be and frequently are called in to address the needs of the situation.
- A higher level of training and capability can make the incident much more manageable and thorough mitigation can be completed in a more timely fashion.



# Strategic & Tactical



WIND DIRECTION

COLD ZONE



# IMT ICP Support



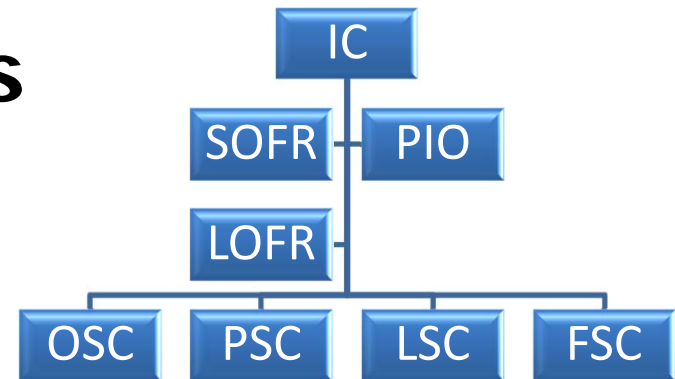
IC usual is:

- Fire Chief, Police Chief, EMS Director, Etc.
- IMT – Team Leaders are trained to assist or participate as an IC.

- **IMT will support and, if requested, help manage a local Incident Command Post.**
- Performs tactical-level, on-scene incident command and management.
- Typically comprises of the Command & General Staff
- May include other designated officials, responders, private-sector, nongovernmental, and volunteer organizations.

# Managing the Incident is IMT's Focus

- IL-IMT supports local operations as an “All Hazards Team”.
- Team members are trained in multiple specific positions.
- To help bring organization to your situation we can assist by:
  - Develop the Incident Action Plan (IAP).
  - Help contain costs associated with the situation.
  - Coordinate the procuring of resources.
  - Provide qualified staff support (Liaison, Safety, PIO, Ops, Logistics, Planning and Finance).

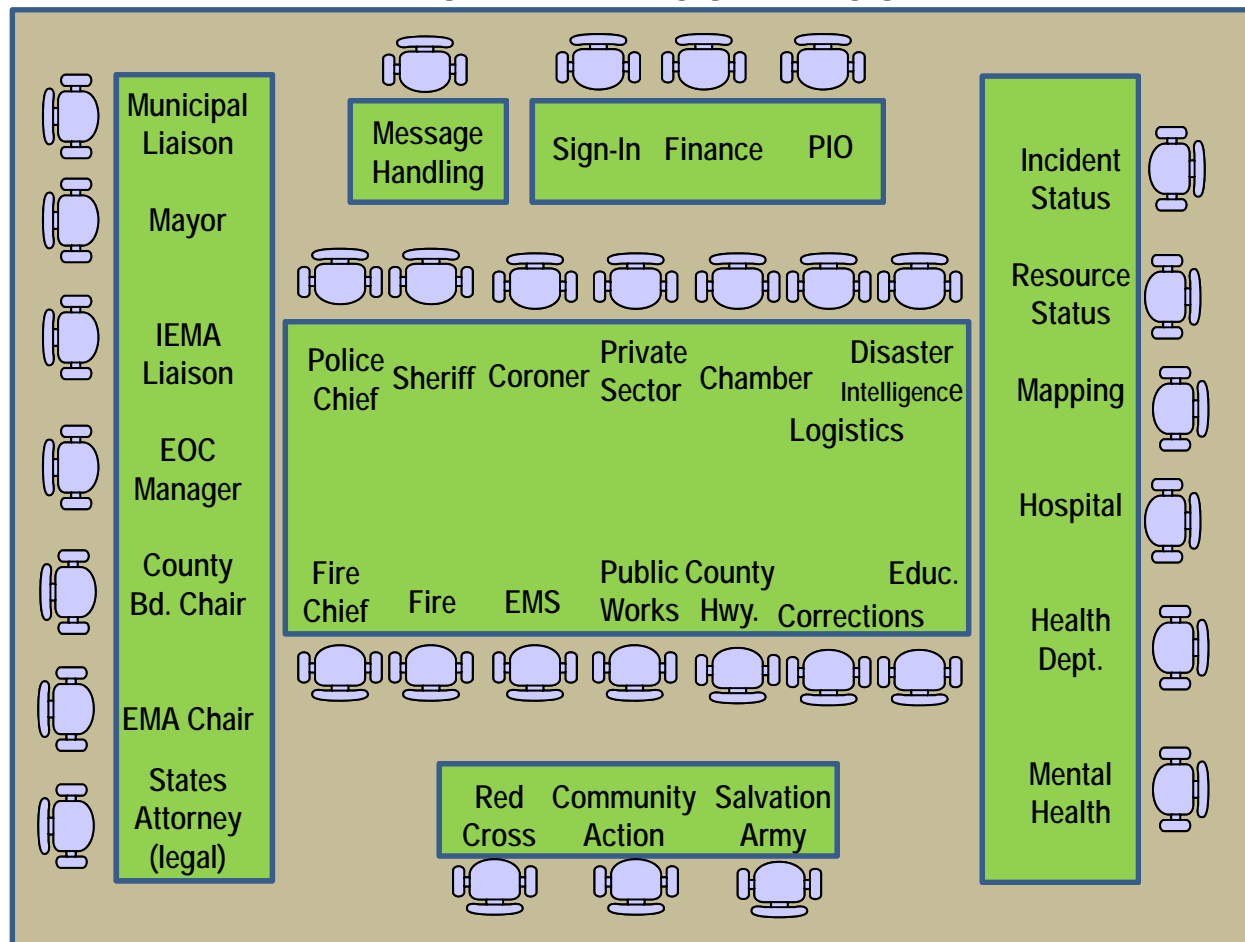




# EMAT EOC Support

EMAT will support  
and help manage a  
local Emergency  
Management  
Agency EOC.

SAMPLE EOC LAYOUT



**NOTE:**

- Drawing not to scale.
- Other EOCs may have different participants and layout.



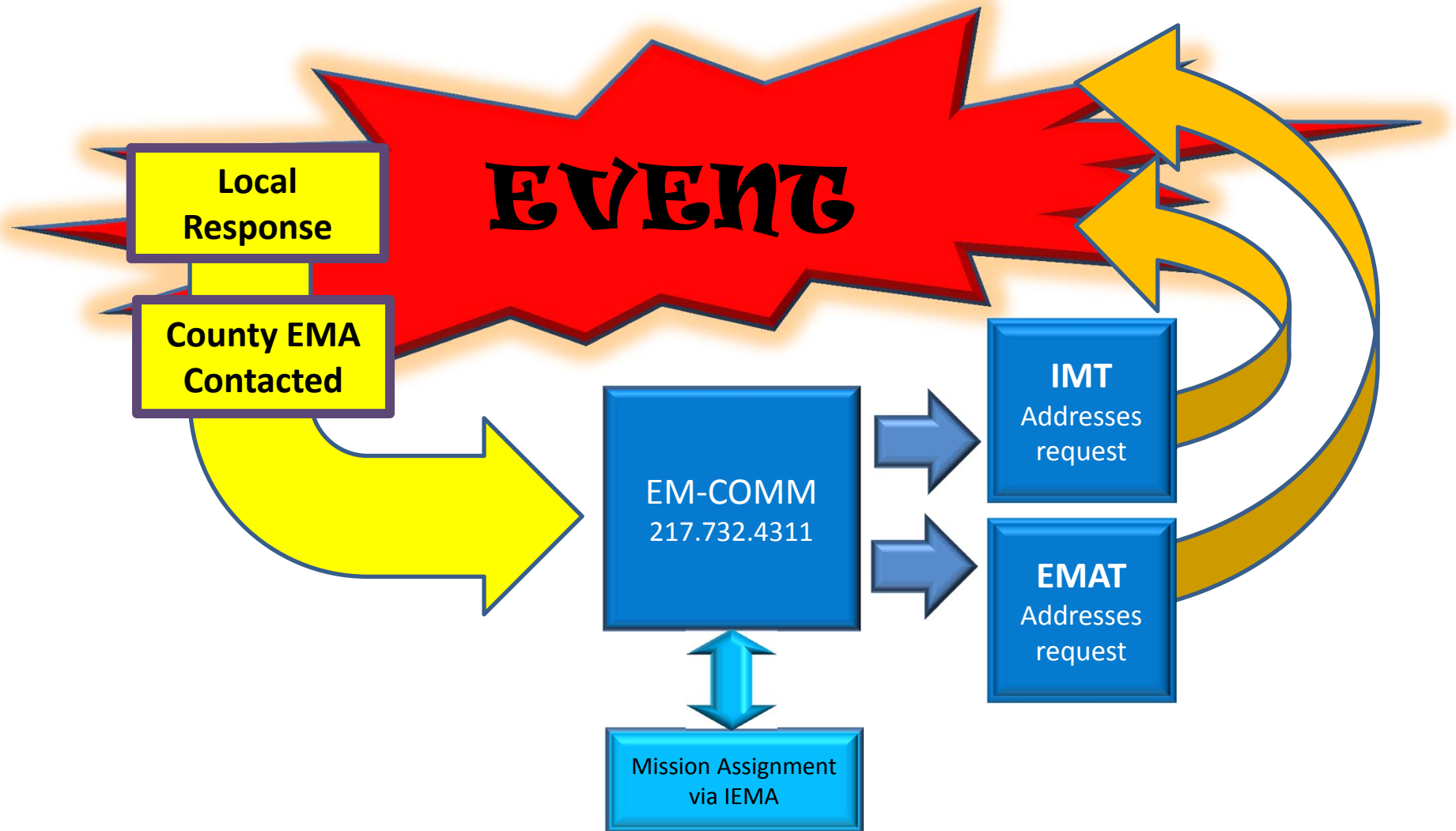
# EMAT EOC Support

EMAT assists chief elected officials with disaster plan:

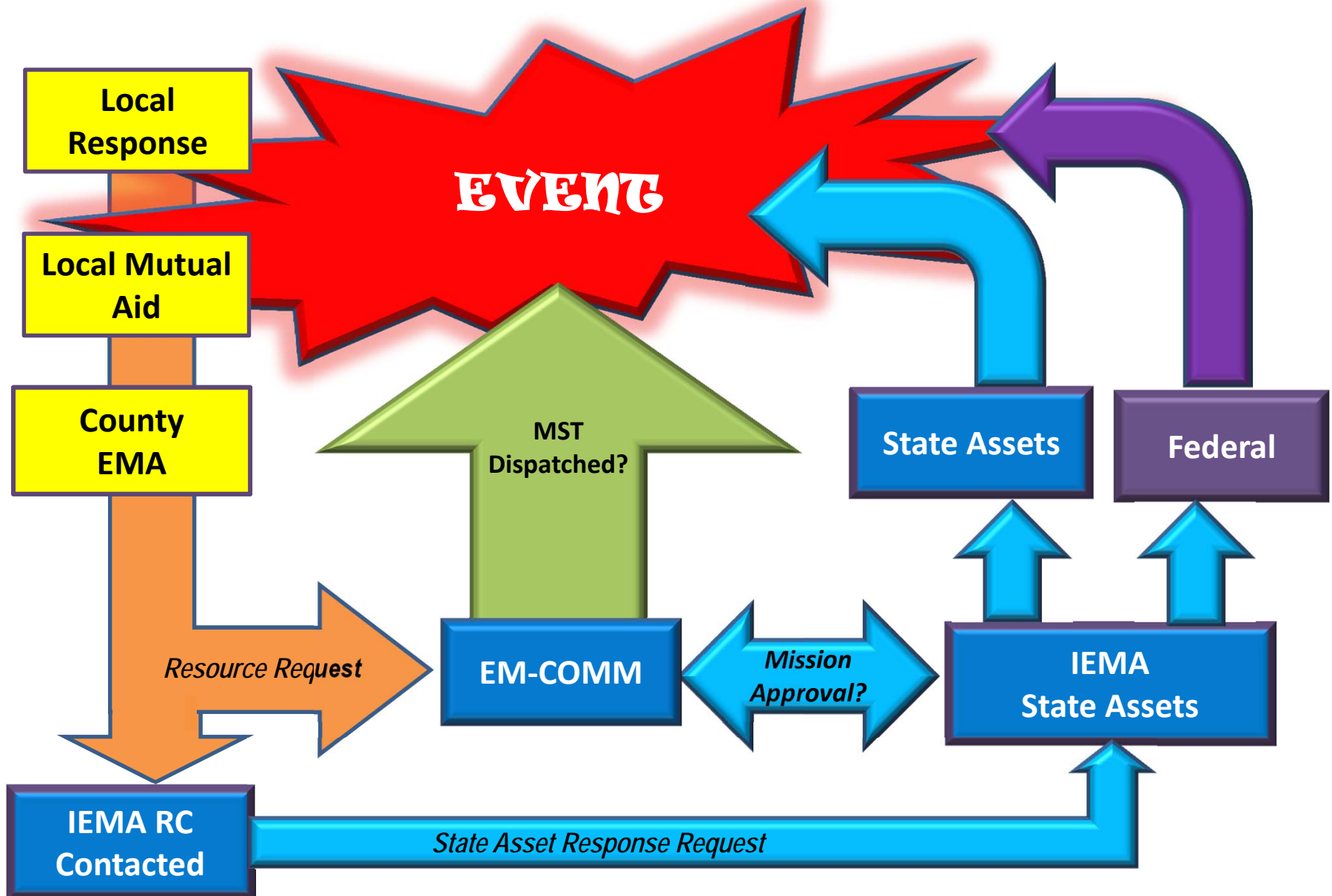
- Assist in the Management of the Local EOC
- Gather Disaster Intelligence
- Produce Situation Reports for Incident Action Plan
- Provide Forward Command
- Provide Damage Assessment
- Debris Removal
- Shelters & Meals
- Work with Local, County, Regional and State EOC.

# Local Mutual Aid Request

Note: Teams are not dependent upon each other in order to be dispatched.



# State Disaster Process



# Diversity Is One of Our Strengths

- The Teams consists of seasoned professionals from various response disciplines including fire, law enforcement, emergency medical services, emergency management, public works and other disciplines.
- MSTs were created to support local response efforts.



# EM-COMM

(EMERGENCY MANAGEMENT COMMUNICATIONS)



*EM-COMM is 9-1-1 Public Safety Answering Point (PSAP) for Logan County and also provides state MST(s) dispatch, 24/7.*

**Phone: 217.732.4311**

**Radio: STARCOM IESMA Channel**

**Email: [loganemcom@lincolnil.us](mailto:loganemcom@lincolnil.us)**

# For Further Information



## Bucky Washam, Supervisor

- 217.732.4311
- STARCOM IESMA Channel (radio)
- loganemcom@lincoln.il.us



## Lee Shannon, Coordinator

- 847.395.1000
- aclassiii@aol.com
- www.iesma.org



## Steve Clarkson, Co-Chair

- 217.202-5508
- info@il-imt.org
- www.il-imt.org